



About Us

Te Runanga o Whaingaroa was established in 1991, to access resources and deliver services for our whanau of Whaingaroa. We are offering your child Rheumatic Fever checks at school to help prevent the complications caused by untreated sore throats, as this could lead to Rheumatic fever and other health problems.

Who does the RF checks?

Yvonne will visit your school regularly to check and treat your child if needed. For more information please contact **Yvonne** at the Runanga on **09 405 0340** or **021 852 269** as she will be more than willing to assist you.

Your Rights:

The Health & Disability Commissioner's Code of Rights applies to these health checks. For more information about your rights, visit www.hdc.org.nz or call **0800 555 050**.

Privacy:

Your child's privacy is important to us. At all times your privacy will be protected in accordance with this consent form. As part of providing RF checks, and the overall RF programme, we will collect information about your child, including their name, age, medical history, height weight, vital signs and swabs to assist with lab results. Authorised parents and staff can see your child's information and you will be notified in the first instance of any treatment needed for your child. Your family doctor, health kaiahi or other health professionals involved in the care of your child will be notified of any treatment that your child receives through the programme. In order to ensure best and safest care of your child, there may be times when we may require additional information from your GP, or from other health professionals involved to ensure your child's needs are met to a high standard. At times the use of your information we collect for may be used for statistical planning and or educational purposes.

Te Runanga o Whaingaroa

Cnr Leigh Street &

Waikare Avenue

KAEO

Phone: 09 405 0340

Mobile: 021 852 269

yvonne.ohlson@whaingaroa.iwi.nz



Offering high quality basic health care to children and their communities.

Assessments & management of common childhood health conditions.

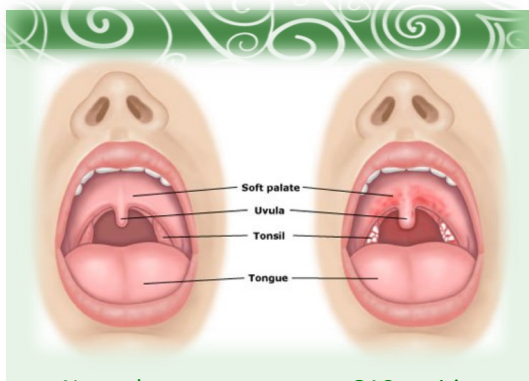
Whānau, Family Information

The information listed within will help you decide whether your child should have these health checks. Talk to whanau about it, and when you have made a decision, please fill in the form, sign it and return to your child's School.

Important Information

It's important for you and your whānau to know that consenting means - your child may have swab and health checks to help with the assessment.

It is important for us to know whether you consent or do not consent to the programme.



Normal

GAS positive

What is Rheumatic Fever?

Rheumatic Fever is a serious disease that could cause serious heart problems. It usually starts with a sore throat.

Who is most at risk?

Maori & Pacific Island children between 5 – 15 years
Families/whanau with a history of Rheumatic Fever
Families/whanau who share their homes with lots of others.

Rheumatic Fever is a preventable disease so “let’s make a change”

What can I do to prevent Rheumatic Fever?

- * If your child has a sore throat take them to a doctor and ask for a throat swab
- * If the swab shows a Strep A bug the doctor will prescribe a 10 day course of antibiotics
- * It is very important to take all the antibiotics to prevent Rheumatic Fever developing

What is GAS?

- * Group A Streptococcus (GAS) is one of the most leading causes of Rheumatic Fever, a one-off throat infection can also lead to RF.
- * A child with “GAS” or “strep A” should be treated with antibiotics for 10 days.
- * Over 95% of Northland children affected by rheumatic fever are Maori.
- * “strep throats” are diagnosed with a throat swab
- * Once diagnosed with rheumatic fever, the child would need to take penicillin injections every 28 days for at least 10 years.

Rheumatic Fever Co-ordinator

Co-ordinator: **Yvonne Ohlson**
Phone: **09 4050340**
Mobile: **021 852 269**
yvonne.ohlson@whaingaroa.iwi.nz

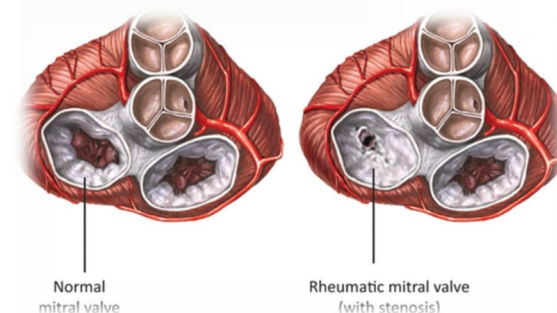
Other Services

For more information on services we provided at Te Runanga O Whaingaroa visit our website
www.whaingaroa.iwi.nz

Contact Us

Te Runanga O Whaingaroa

09 4050340
PO Box 88
KAEO 0448



SORE THROATS CAN BREAK A HEART